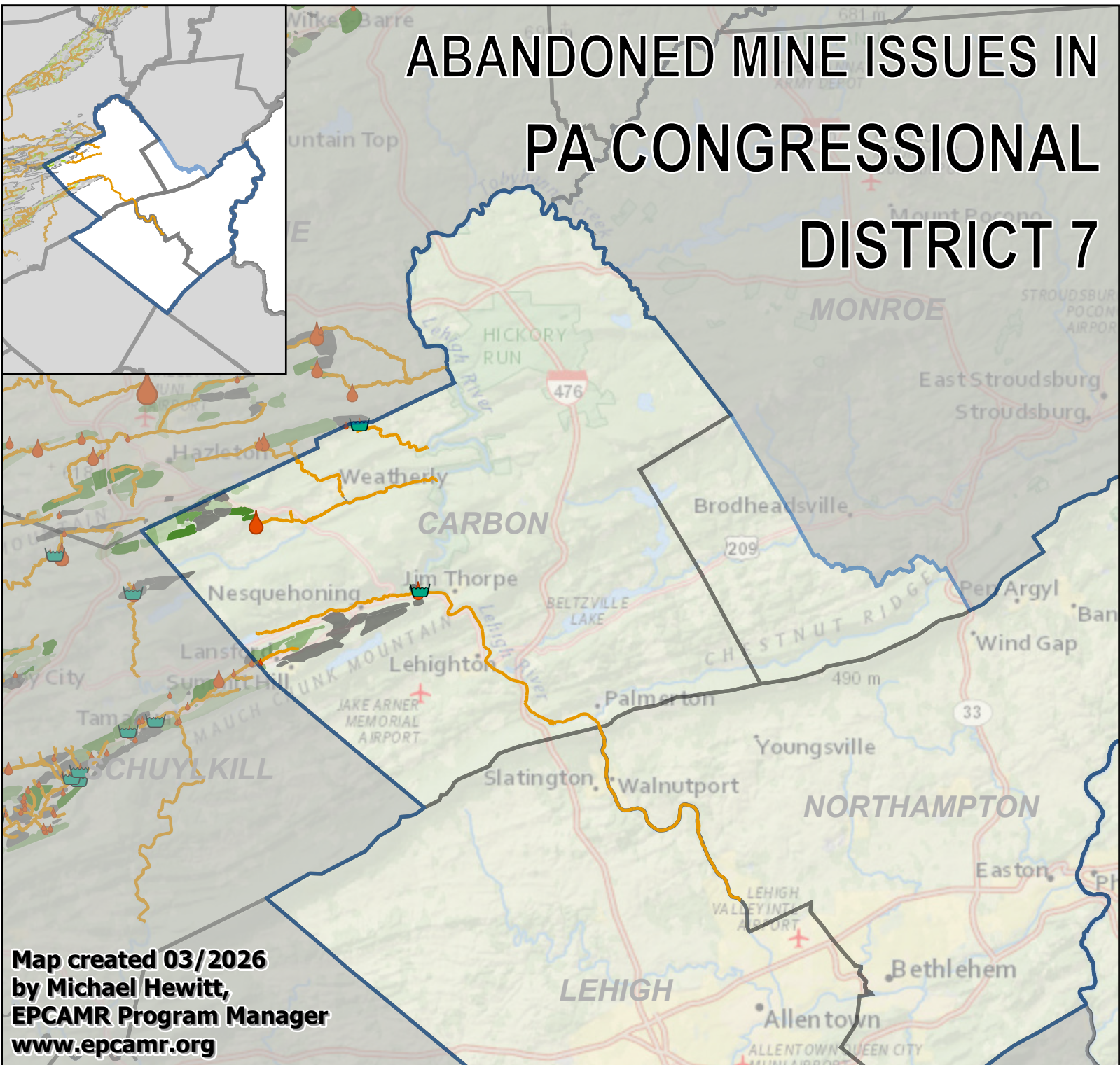


# ABANDONED MINE ISSUES IN PA CONGRESSIONAL DISTRICT 7



Map created 03/2026  
by Michael Hewitt,  
EPCAMR Program Manager  
[www.epcamr.org](http://www.epcamr.org)

### Legislative District

- 7
- Outside District

### AMD Treatment Type

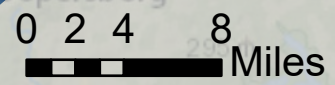
- ♻️ Passive Treatment System (13)
- 📄 Stream; Stream Monitoring (1)
- Other (1)

### AMD Flows (GPM)

- 0 - 500 gpm
- 500 - 1K gpm
- 1K - 5K gpm
- 5K - 20K gpm
- > 20K gpm
- AMD Impacted Streams

### AML Sites (DEP AMLIS)

- Unreclaimed
- 1 to 25% Reclaimed
- 26 to 50% Reclaimed
- 51 to 75% Reclaimed
- 76 to 100% Reclaimed

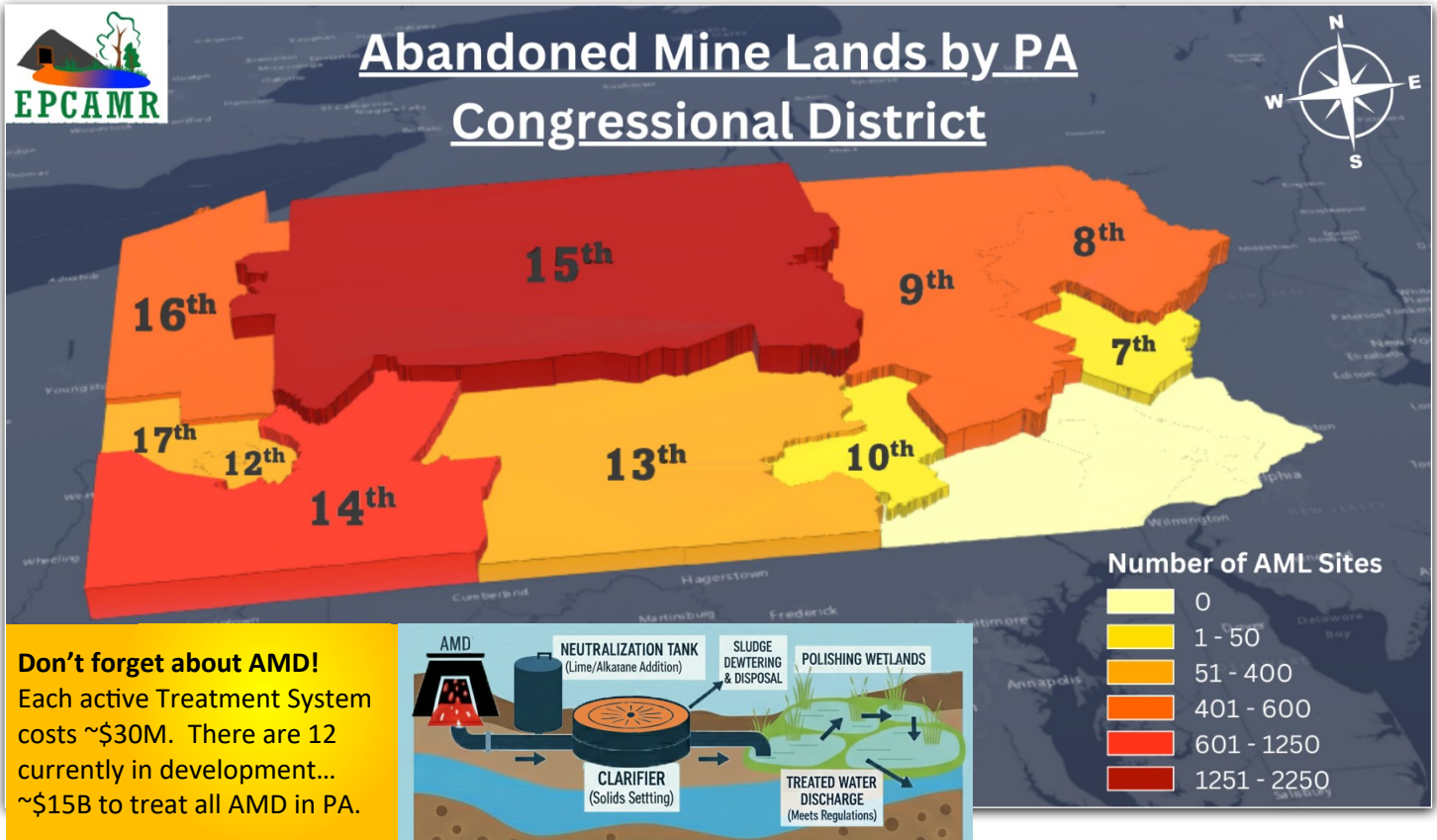


Esri, Garmin, HERE, UNEP-W  
NRCAN, GEB

District 7 Inventory '26	AML Sites	Features	% AML Features	Acres*
Unreclaimed	37	247	77%	2,429
Reclaimed	0	74	23%	386
Active	0			
<b>Total</b>	<b>37</b>	<b>321</b>		<b>2,815</b>

Individual features include site conditions like open mine shafts, waste coal piles, strip mine pits, subsidence prone areas, contaminated mine water discharges, and etc. Sites were abandoned prior to the passage of the Surface Mining Control and Reclamation act of 1977. Active status refers to re-mining of the site.

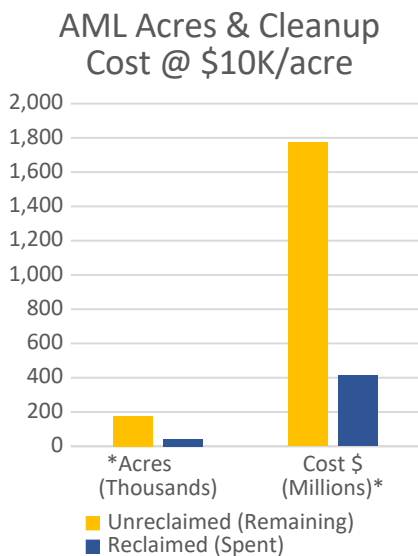
AMD Impaired Streams ‡ 58 miles



**Don't forget about AMD!**  
Each active Treatment System costs ~\$30M. There are 12 currently in development... ~\$15B to treat all AMD in PA.

**More than 2 dozen coal states & tribes need continued support & increases of federal funds:**

1. AML Trust Fund – Fee per ton of coal (reduced again). Coal sells at \$40-200/ton.
  - Only 22.4¢ surface, 9.6¢ underground, & 8¢ lignite, a 0.7%, 0.3%, & 0.2% fee...
2. AMLER – \$130M/yr for cleanup & economic revitalization in hardest hit states.
3. IJA – Provides ~\$11 Billion to address safety hazards & AMD in all coal states.



Statewide PA Inventory '26	AML Sites	Features	% of AML Features	Acres*
Unreclaimed	5,320	27,859	79.3%	177,205
Reclaimed	253	7,286	20.7%	41,119
Active	19			
<b>Total</b>	<b>5,592</b>	<b>35,145</b>		<b>218,324</b>

AMD Impaired Streams ‡ 5,663 miles  
Delisted Streams '24-'26 17 miles

\*These are conservative acreage estimates: AML Feature Polygon GIS layer was projected from GCS North American 1983 to USA Contiguous Albers Equal Area Conic to preserve area and does not include a count of AML Feature Points. Source: 01/2026 AMLIS Inventory by PA DEP Bureau of Abandoned Mine Reclamation (BAMR) updated quarterly.

‡ AMD stream miles. Source: 2026 Pennsylvania Integrated Water Quality Report: Clean Water Act Section 303(d) List and 305(b) Report created by PA DEP Water Quality Division (WQD) biannually.